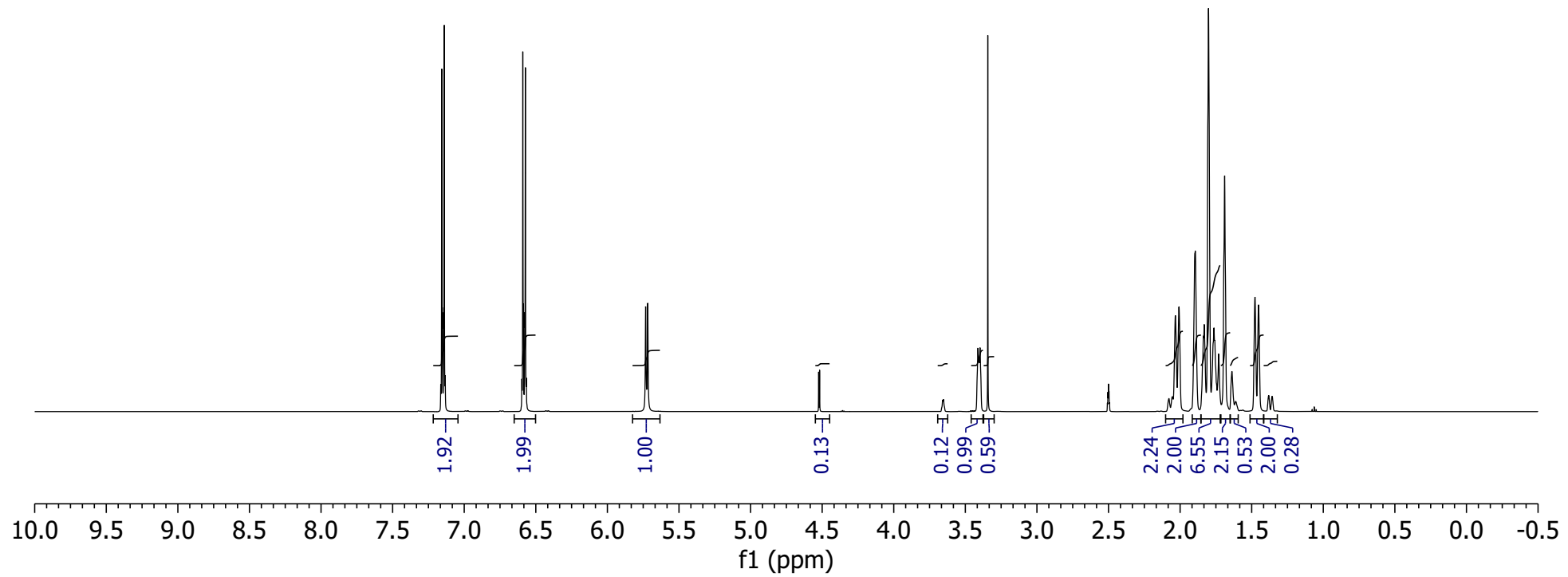


7.16  
7.15  
7.14  
7.14  
7.13  
6.60  
6.59  
6.59  
6.58  
6.57  
6.57  
5.73  
5.72

4.52  
4.52

3.66  
3.65  
3.41  
3.40  
3.40  
3.34  
2.51  
2.50  
2.50  
2.50  
2.49  
2.03  
2.01  
1.89  
1.84  
1.83  
1.80  
1.76  
1.76  
1.73  
1.69  
1.64  
1.48  
1.45  
1.38  
1.38  
1.36  
1.36

2302EURO.193A  
Bromantane CAS: 37913-26-6 LOTI230323  
DMSO, H-1  
NUMEGA 3-14-2023



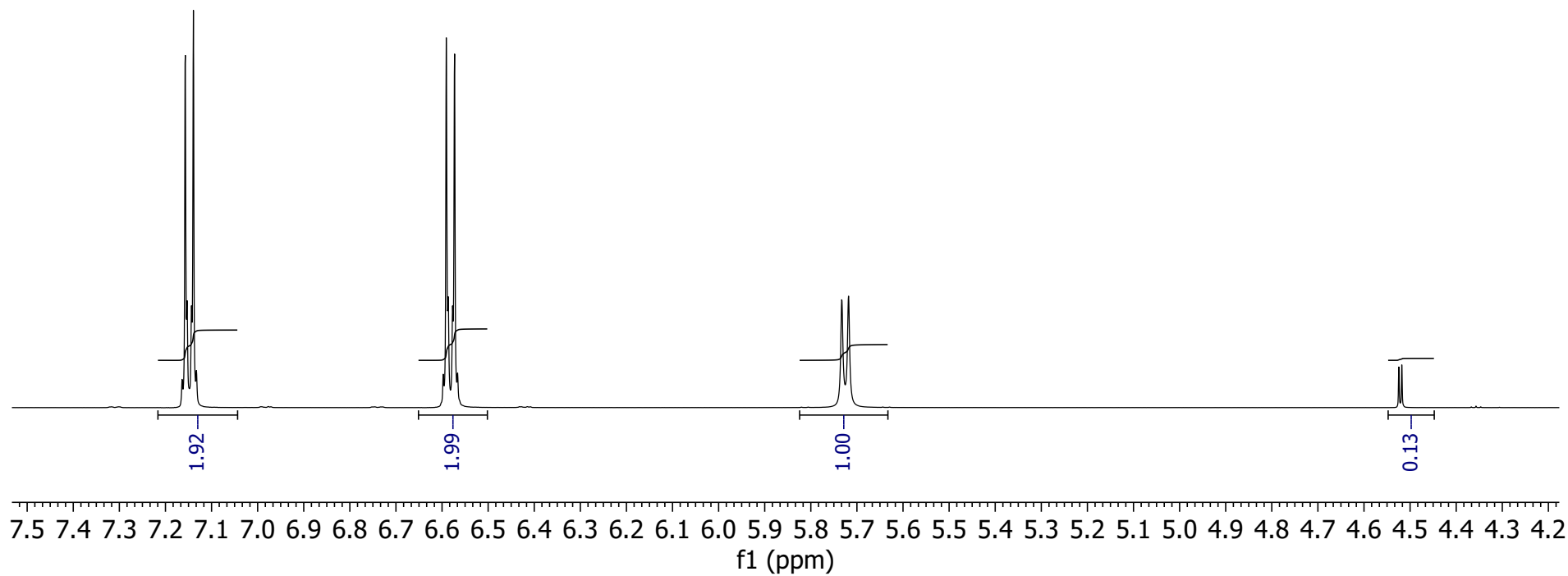
7.16  
7.15  
7.14  
7.14  
7.13

6.60  
6.59  
6.59  
6.58  
6.57  
6.57

5.73  
5.72

4.52  
4.52

2302EURO.193A  
Bromantane CAS: 37913-26-6 LOTI230323  
DMSO, H-1  
NUMEGA 3-14-2023



2302EURO.193A  
Bromantane CAS: 37913-26-6 LOTI230323  
DMSO, H-1  
NUMEGA 3-14-2023

