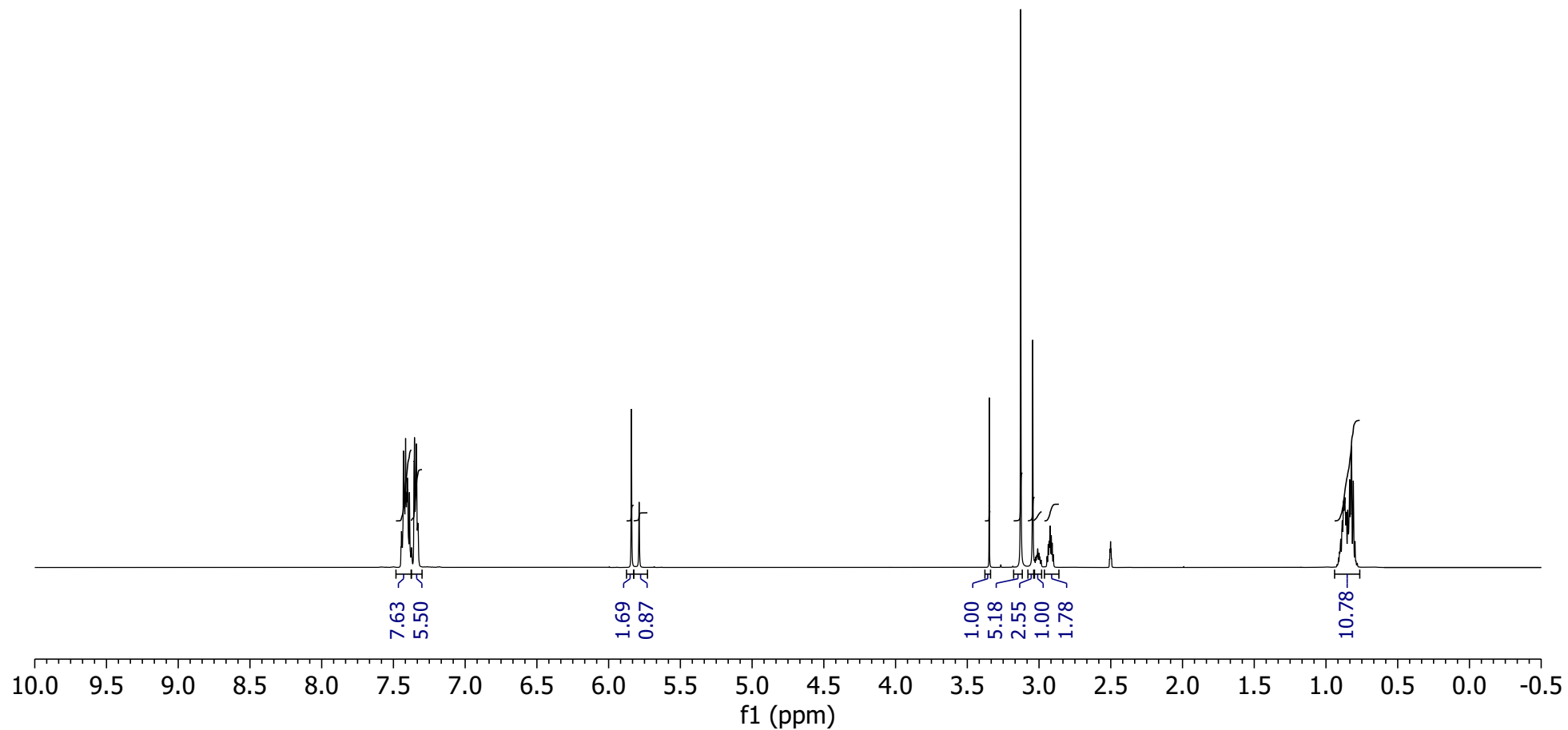


7.45
7.44
7.44
7.43
7.43
7.42
7.42
7.41
7.40
7.40
7.39
7.37
7.36
7.35
7.34
7.33
5.84
5.79
3.35
3.13
3.04
3.03
3.02
3.02
3.01
3.00
2.99
2.99
2.94
2.94
2.93
2.92
2.91
2.91
2.90
2.51
2.51
2.50
2.50
2.49
0.89
0.88
0.87
0.86
0.86
0.85
0.83
0.83
0.82
0.81

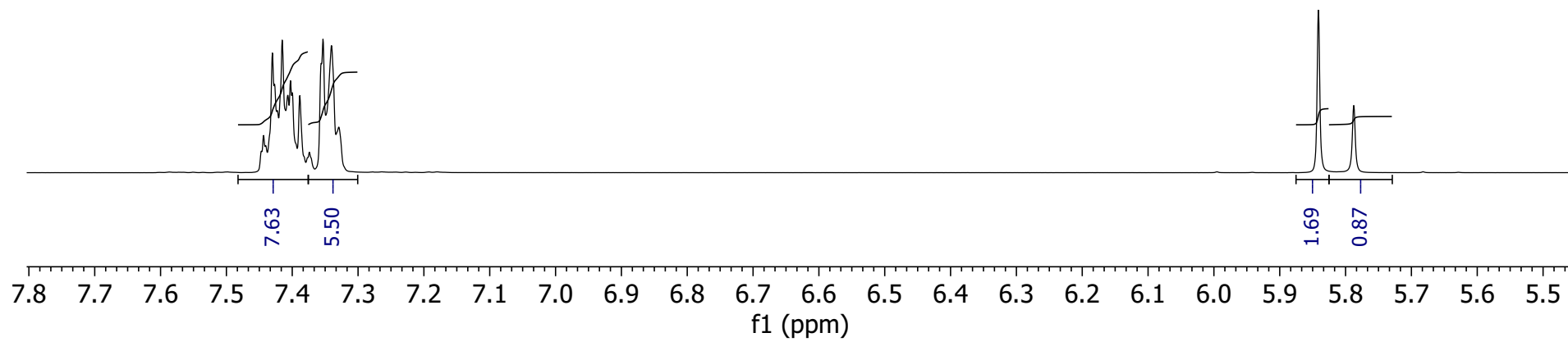
2304EURO.993H
N METHYL CYCLAZODONE CAS:14461-92-8 LOT230423
DMSO, H-1
NUMEGA 6-5-2023



7.45
7.44
7.44
7.43
7.43
7.42
7.42
7.41
7.40
7.40
7.39
7.37
7.36
7.35
7.34
7.33

— 5.84
— 5.79

2304EURO.993H
N METHYL CYCLAZODONE CAS:14461-92-8 LOT230423
DMSO, H-1
NUMEGA 6-5-2023



3.35
3.13
3.04
3.03
3.02
3.02
3.01
3.00
2.99
2.99
2.94
2.94
2.93
2.92
2.91
2.91
2.90
2.51
2.51
2.50
2.50
2.49

0.89
0.88
0.87
0.86
0.86
0.85
0.83
0.83
0.82
0.81

2304EURO.993H
N METHYL CYCLAZODONE CAS:14461-92-8 LOT230423
DMSO, H-1
NUMEGA 6-5-2023

