

Certificate of Analysis

Bemethyl (Bemityl)

2-Ethylsulfanyl-1H-benzimidazole

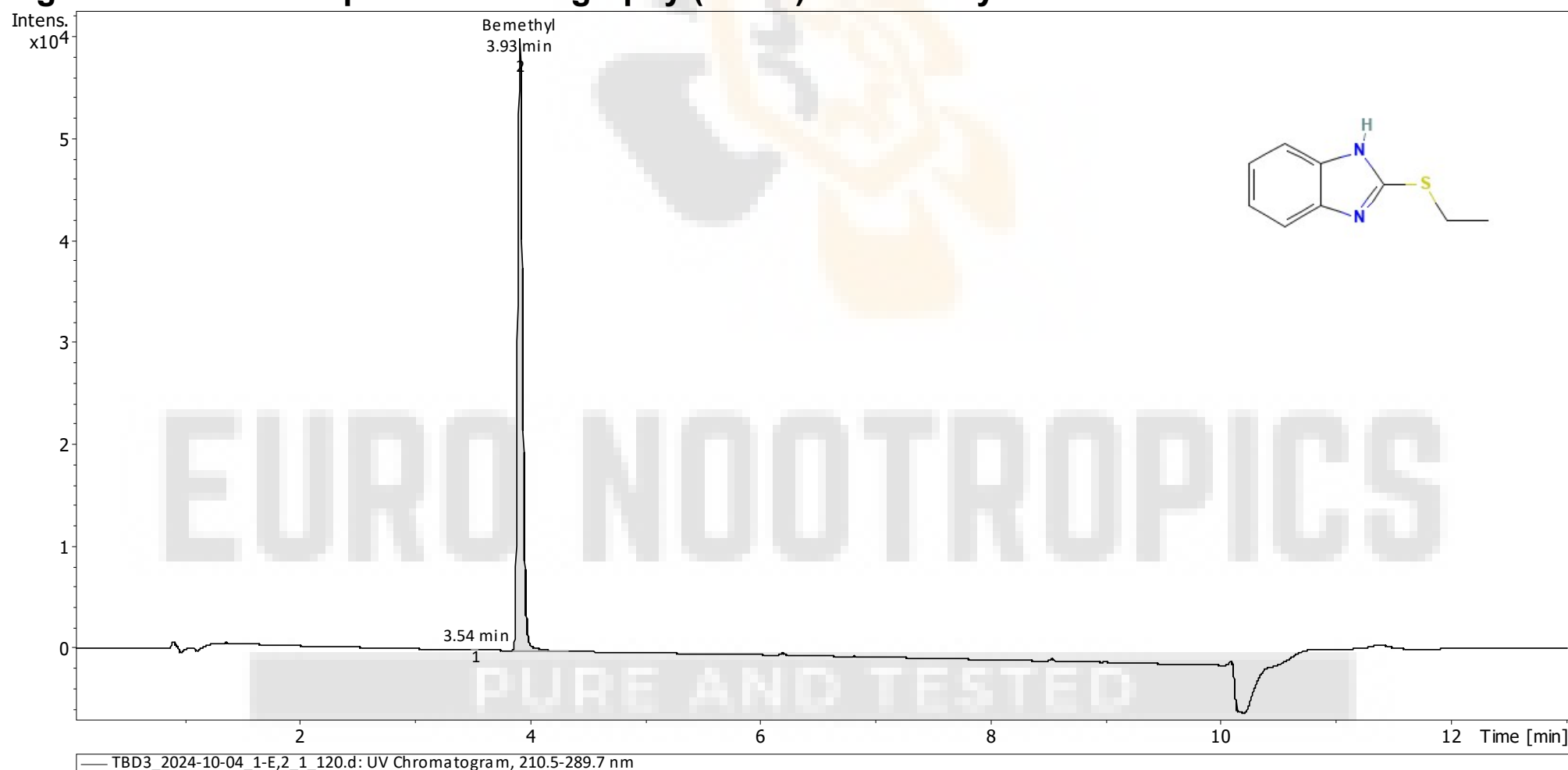
Compound : Bemethyl
Lot number : 221024
Analysis date : 2204-10-25
Purity % : 99.95%
Method : HPLC-UV-MS

Client : Euro Nootropics

PubChem CID: 720878

<https://pubchem.ncbi.nlm.nih.gov/compound/720878>

High Performance Liquid Chromatography (HPLC) UV – Purity Test



PEAK LIST		Number of detected peaks: 2		
	Time (min)	Area	%Area	
1	3.54	9.49E+01	0.05	
2	3.93	1.78E+05	99.95	Bemethyl

Analysis Performed by
Ken Pendarvis, ChE
Analytical Chemist
MZ Biolabs
contact@mzbiolabs.com



2024-10-25

Bemethyl (Bemityl)

PubChem CID: 720878

<https://pubchem.ncbi.nlm.nih.gov/compound/720878>

Mass Spectrometry (MS) – Identity Test

Identity confirmed using HPLC-MS

Molecular weight calculated using monoisotopic m/z values from mass spectrum

Expected monoisotopic mass : 178.06 Da

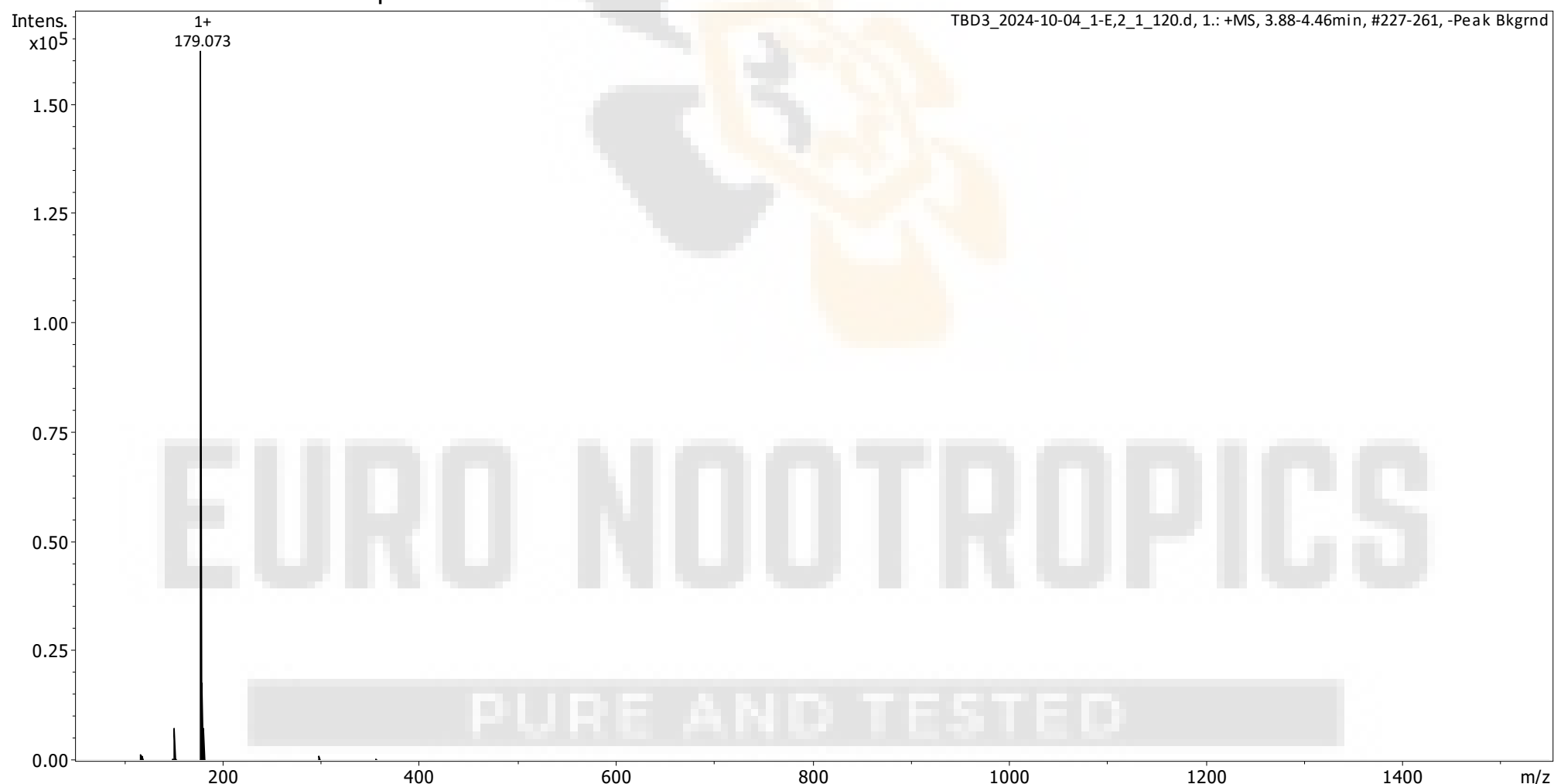
Measured monoisotopic mass : 178.07 Da

Molecular weight confirmed


Note : Monoisotopic m/z values are not easily seen in full spectrum view for larger molecules and peptides.

The dominant isotopic peak (base peak) shown in the spectrum below can be used to approximate the average molecular weight frequently reported by vendors and databases as a secondary means of confirmation.

Recorded MS spectrum



Analysis Performed by
Ken Pendarvis, ChE
Analytical Chemist
MZ Biolabs
contact@mzbiolabs.com



2024-10-25